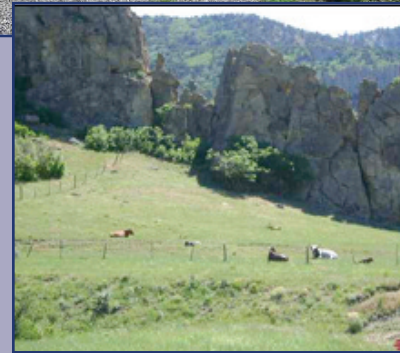


Sheep Creek Ranch

EXCEPTIONAL 1,881 +/- acre hunting and cattle ranch, located in Northwestern Colorado, about 11 miles southwest of Meeker, consisting of 1,041 +/- deeded acres, 840 +/- BLM leased acres and adjoins 9,000 +/- acres of BLM land. Strategically located wells, ponds & roads are a major attraction for game animals & a paragon for hunting enthusiast including deer, elk, bear, mountain lion, grouse & turkey. Improvements include a remodeled



log/rock/stucco home, modern bunkhouse, sheds, barn & numerous green pastures. A must see ranch with beautiful

rock outcroppings, pinion, juniper, oak, service berries, pine & aspen trees. Elevations range from 6,600' to 8,700'. Surrounded by wildlife & recreation. Meeker is one of the best kept secrets in the United States. Main events include old-fashioned 4th of July, Concerts, Barn Dances, Sheep Dog Trials, Snowmobiling and Trophy Hunting & Fly Fishing. Call Onea Miller at 970-321-7777. \$1,975,000

About the Realtor

Onea Jewel Miller grew up on big ranches in Colorado, Nebraska and South Dakota. His family ran huge cattle and sheep spreads where he developed his strong work ethic. Onea also came from a long line of rodeo cowboys and he participated in calf roping, team roping and showing performance horses. During summer breaks from college, he trained and rode race horses, cutting and calf roping horses.



Western Exposures Realty is the fulfillment of a dream for Onea Miller. A very motivated and talented group of realtors continue to keep his dream alive and flourishing.

Western Exposures Realty, LLC 1033 Market Street • Meeker, CO 81641
oneamiller@gmail.com • ph: 970.878.5877 www.westernexposures.com